




MERRY


~~Mini~~ Missions



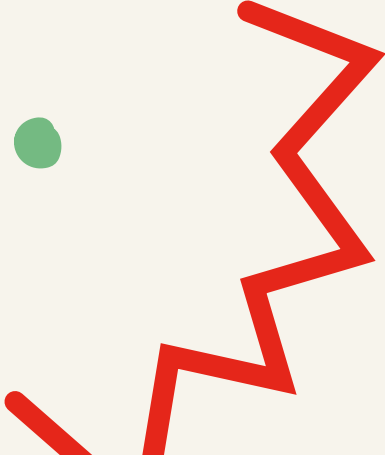

Design a Fair Isle Sweater



Get ready to zigzag, Minis, because we're drawing a special type of patterned knitwear.



Share your creations by using
#BodenMiniMissions or uploading to our
gallery at boden.com/mini-missions





What is Fair Isle?



Fair Isle is one of the Shetland Islands. This tiny place is known for a special knitting technique, where coloured threads are knitted into patterned rows that go all the way around the Sweater.

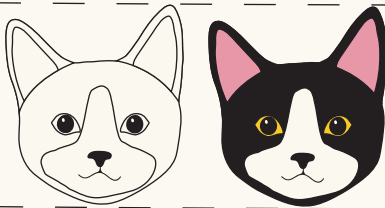


Practise your patterns

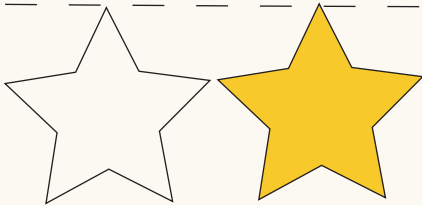


These days, Fair Isle Sweaters include all sorts of fun shapes. Copy the drawings below, so they repeat in a nice even pattern.

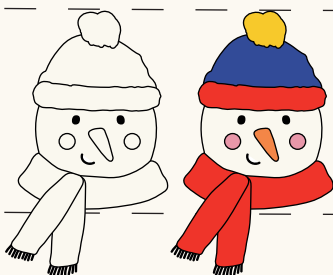
A cat



A star



A snowman



Design an animal Fair Isle



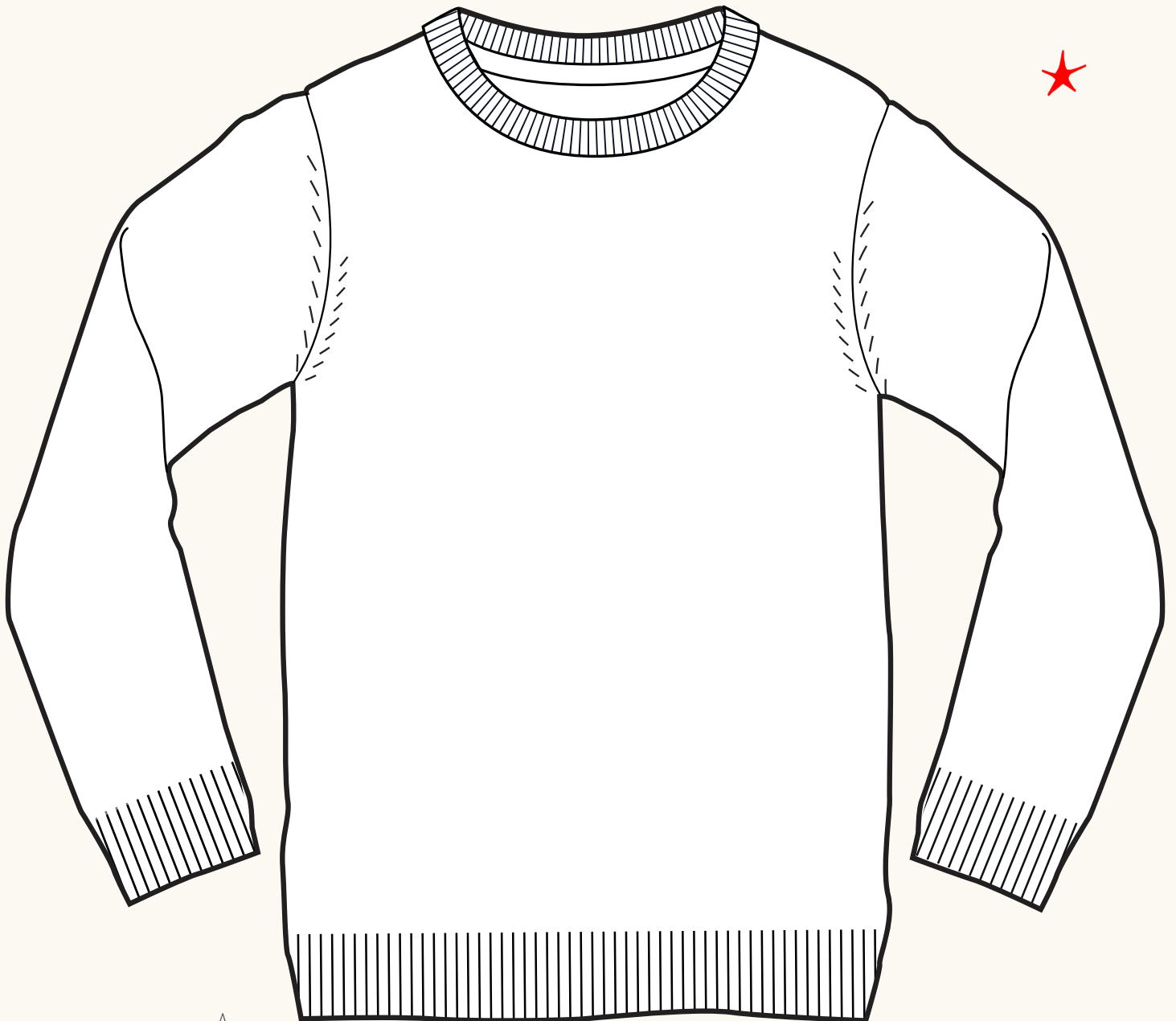
Now use the technique of repeating shapes on this Sweater.
Draw rows of your favourite animals or just stick to one type
like birds or fish.





Draw a night-time Fair Isle

We've removed the guidelines now you've had some practice.
Draw rows of shapes that remind you of the night time,
such as stars, moons, owls or even UFOs.





Create a festive Fair Isle

Design your ultimate Christmas Sweater with rows of Father Christmas, reindeer, snowmen and anything else that gets you in the festive spirit.

